




PUSH SWITCH

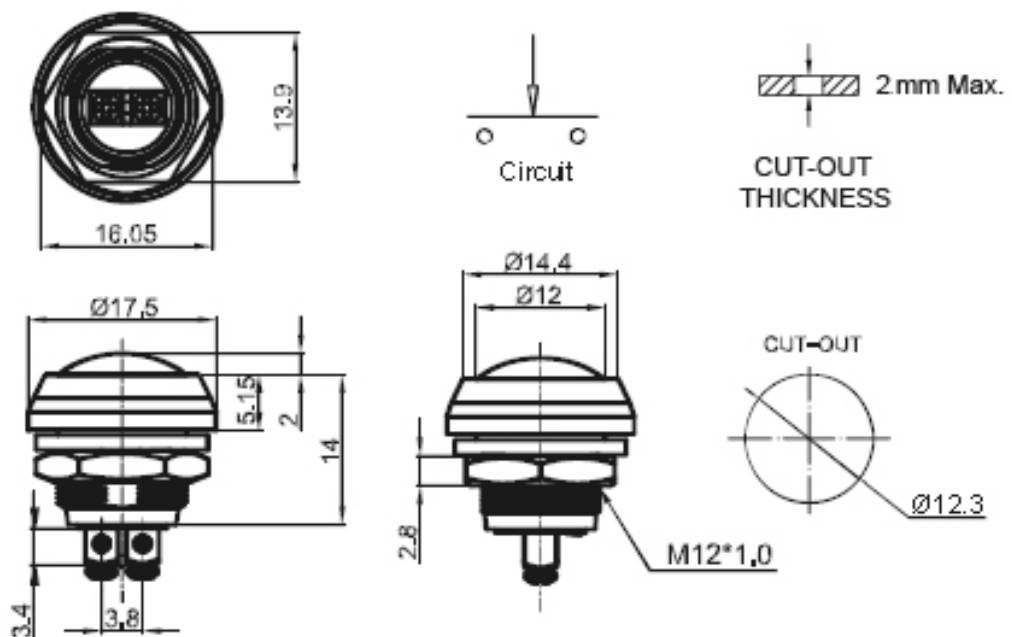
PB-12 SERIES

How to Order:

PB - 12		M11	—	R	P	U	N	—	F	A
FUNCTIONS				SHAPE	BUTTON MATERIAL	BUTTON COLOR	LAMP COLOR		INSTALLATION TYPE	TERMINAL TYPE
M11 SPST, OFF-(ON), 2P M12 SPST, OFF-(ON), 2P LAMP Z11 SPST, OFF-ON, 2P Z12 SPST, OFF-ON, 2P LAMP				R  non-lighted flat end-top	P PLASTIC	B BLACK G GREEN R RED U BLUE Y YELLOW	N NONE R RED W WHITE U BLUE G GREEN Y YELLOW		F FIXED SCREW	B 2.8 x 0.5 C screw stud for non-lighted dome off-(on) only
M = MOMENTARY Z = LOCK				S  len-lighted						
				C  non-lighted dome shape						



PB-12M11-CPYN-FC

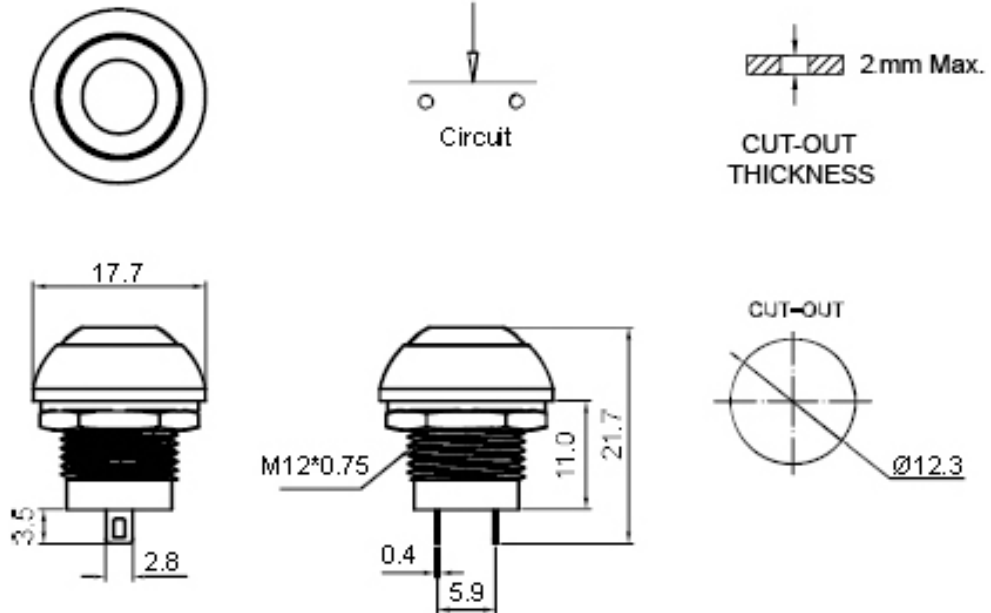


PUSH SWITCH

PB-12 SERIES



PB-12M11-RPUN-FB



PB-12M12-SPGG-FB

