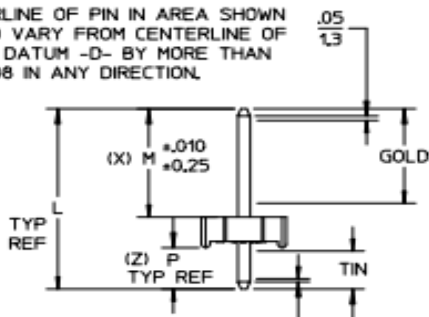
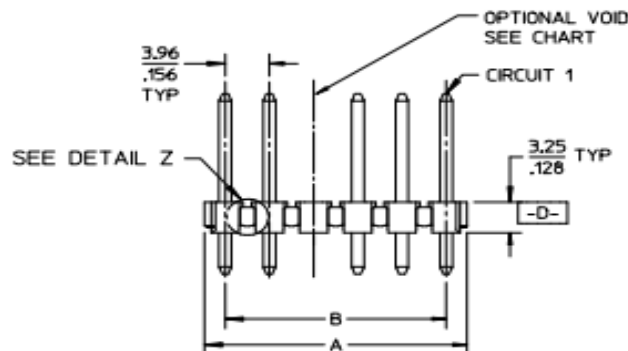
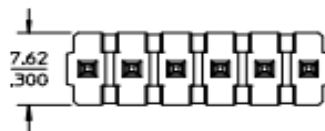


CENTERLINE OF PIN IN AREA SHOWN NOT TO VARY FROM CENTERLINE OF PIN AT DATUM -D- BY MORE THAN 0,20/.008 IN ANY DIRECTION.



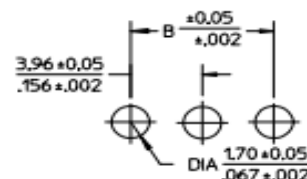
CENTERLINE OF PIN IN AREA SHOWN NOT TO VARY FROM CENTERLINE OF PIN AT DATUM -D- BY MORE THAN 0,13/.005 IN ANY DIRECTION.



| B | A | CKT SIZE |
|-------------|---------------------------|----------|
| 3.96/.156 | 6.78-7.87 / .267-.310 | 2 |
| 7.92/.312 | 10.74-11.84 / .423-.466 | 3 |
| 11.89/.468 | 14.71-15.80 / .579-.622 | 4 |
| 15.85/.624 | 18.67-19.76 / .735-.778 | 5 |
| 19.81/.780 | 22.63-23.72 / .891-.934 | 6 |
| 23.77/.936 | 26.59-27.69 / 1.047-1.090 | 7 |
| 27.74/1.092 | 30.56-31.65 / 1.203-1.246 | 8 |
| 31.70/1.248 | 34.52-35.61 / 1.359-1.402 | 9 |
| 35.66/1.404 | 38.48-39.57 / 1.515-1.558 | 10 |
| 39.62/1.560 | 42.44-43.54 / 1.671-1.714 | 11 |
| 43.59/1.716 | 46.41-47.50 / 1.827-1.870 | 12 |
| 47.55/1.872 | 50.37-51.46 / 1.983-2.026 | 13 |
| 51.51/2.028 | 54.33-55.42 / 2.139-2.182 | 14 |
| 55.47/2.184 | 58.29-59.39 / 2.295-2.338 | 15 |
| 59.44/2.340 | 62.26-63.35 / 2.451-2.494 | 16 |
| 63.40/2.496 | 66.22-67.31 / 2.607-2.650 | 17 |
| 67.36/2.652 | 70.18-71.27 / 2.763-2.806 | 18 |
| 71.32/2.808 | 74.14-75.23 / 2.919-2.962 | 19 |
| 75.29/2.964 | 78.11-79.20 / 3.075-3.118 | 20 |
| 79.25/3.120 | 82.07-83.16 / 3.231-3.274 | 21 |
| 83.21/3.276 | 86.03-87.12 / 3.387-3.430 | 22 |
| 87.17/3.432 | 89.94-91.08 / 3.541-3.586 | 23 |
| 91.14/3.588 | 93.85-95.00 / 3.695-3.740 | 24 |

- NOTES:
1. MATERIAL: HEADER: GLASS FILLED POLYESTER, 94V-0, MOLDED BLACK.
 2. FINISH:
 - (197) OVERALL REFLOWED MATTE TIN: 0,00152/.000060 MIN OVER 0,00127/.000050 MIN, NICKEL OVERALL.
 - (222) OVERALL MATTE TIN: 0,00254/.000100 MIN OVER 0,00127/.000050 MIN NICKEL
 - (208) SELECT GOLD: 0,00038/.000015 MIN, SELECT TIN: 0,00254/.000100 MIN, OVERALL NICKEL UNDERPLATE: 0,00127/.000050 MIN.
 - (228) SELECT GOLD: 0,00076/.000030 MIN, SELECT TIN: 0,00254/.000100 MIN, OVERALL NICKEL UNDERPLATE: 0,00127/.000050 MIN.
 - (241) SELECT GOLD: 0,00051/.000020 MIN, SELECT TIN: 0,00254/.000100 MIN, OVERALL NICKEL UNDERPLATE: 0,00127/.000050 MIN.
 3. THIS PART CONFORMS TO PRODUCT SPEC PS-08-50.
 4. PACKAGING: SEE CHARTS.
 5. SOLDERABILITY: SEE SMES 152.
 6. PARTS ARE STACKABLE END TO END ON 3,96/.156 CENTERS. (SPACING TABS MUST BE REMOVED ON CIRCUIT SIZES 2 THRU 23 BEFORE PARTS ARE STACKABLE.)
 7. THIS PART CONFORMS TO CLASS B REQUIREMENTS OF COSMETIC SPECIFICATION PS-45499-002.
 8. PIN PUSH-OUT FORCE: PRIOR TO SOLDERING, A 3 LB MINIMUM FORCE (IN EITHER DIRECTION) SHALL BE REQUIRED TO PUSH THE PIN OUT OF THE HEADER.
 9. TEXT ON PART IS FOR REFERENCE ONLY. TEXT AND TEXT LOCATION MAY VARY DEPENDING ON PART NUMBER AND/OR TOOL.

A-41661- * N * * - *
 PACKAGING & OPTIONS
 B=BRASS-BULK PACKED
 NO. OF CKTS.
 VOID CODE
 BLANK=NO VOIDS
 NO-CKT NO. VOIDED
 MULT. VOIDS START WITH #51
 PLATING CODE
 PIN DIMENSIONS



PCB LAYOUT: COMPONENT SIDE
 RECOMMENDED PCB THICKNESS:
 1.57* .18/.062* .007

| DRAWING FORMAT | SHEETS | REV LEVEL |
|----------------|--------|-----------|
| GENERAL DOCS. | 2-* | BE |
| ANNOTATOR | 1 | BF |

NOTE 9 ADDED
 EC NO: UCP2018-0013
 DRAWINGS: 2017/07/28
 CHKD: BT
 APPR: SHWARG 2017/07/28

| QUALITY SYMBOLS | GENERAL TOLERANCES (UNLESS SPECIFIED) | |
|-----------------|--|--------|
| | mm | INCH |
| ▽=0 | 4 PLACES ± --- | ± --- |
| ▽=0 | 3 PLACES ± --- | ± .010 |
| ▽=0 | 2 PLACES ± 0.25 | ± .014 |
| | 1 PLACE ± 0.36 | ± --- |
| | 0 PLACE ± | ± |
| | ANGULAR ± 1/2° | |
| | DRAFT WHERE APPLICABLE MUST REMAIN WITHIN DIMENSIONS | |

| DIMENSION STYLE | |
|------------------------|------------|
| MM/IN | DATE |
| DRAWN BY JSCHAFFER | 2004/03/04 |
| CHECKED BY KSAMIEC | 2004/03/04 |
| APPROVED BY MARGULIS | 2004/03/04 |
| MATERIAL NO. SEE CHART | |

| SCALE | DESIGN UNITS | THIRD ANGLE PROJECTION |
|---|------------------|------------------------|
| INCH | INCH | |
| 2:1 | | |
| TITLE: KK .156 HEADER ASSEMBLY FLAT BREAKAWAY 2-24 CKTS | | |
| molex | | |
| DOCUMENT NO. SD-41661-001 | SHEET NO. 1 OF * | |
| THIS DRAWING CONTAINS INFORMATION THAT IS PROPRIETARY TO MOLEX INCORPORATED AND SHOULD NOT BE USED WITHOUT WRITTEN PERMISSION | | |